

Standard Gas Mixtures (with GC/MS)

1. Analytical Condition

YL Gas Analyzer with GC/MSD & Valve

Oven : 35 °C(2min) -> 20 °C/min -> 180 °C(0min)

Column : GS-Gaspro (30 m * 0.32 mm)

Carrier gas : He, 1.3 mL/min

Valve Temperature : 90 °C

Valve Program : Valve 1 Off -> Valve 1 On (0.2min)

Injection Volume : 250 µL

Detector : MSD (Scan mode)

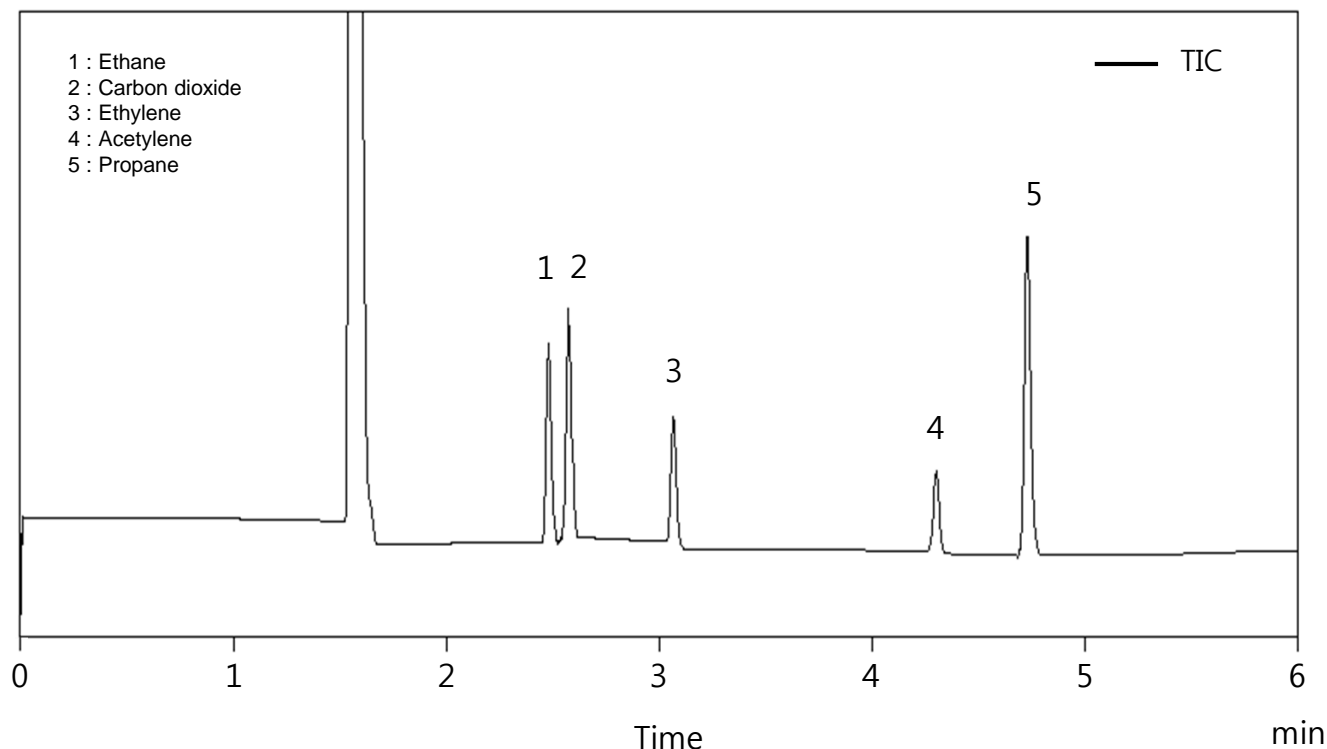
Ion source : 200 °C

Transfer line : 250 °C

Start time : 0 min

Scan range : 1 – 120 amu

2. TIC (Scan mode)



Standard Gas Mixtures (with GC/MS)

3. Spectra

