

# Aldehyde Analysis In Deodorant of Bamboo Pyroligneous Liquor

## 1. Analytical Condition

### YL9100 HPLC

Mobile Phase : ACN : Water = 60 : 40

Flow Rate : 1.0ml/min

Column Oven : 35°C

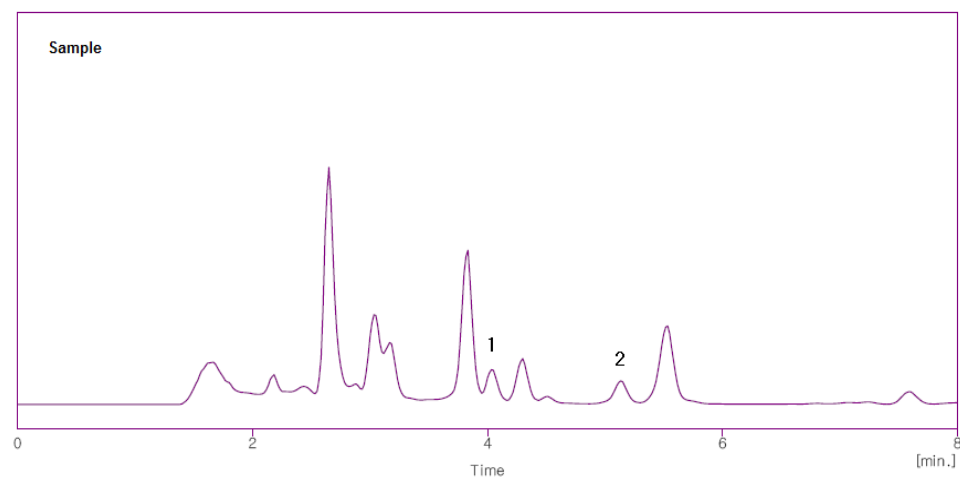
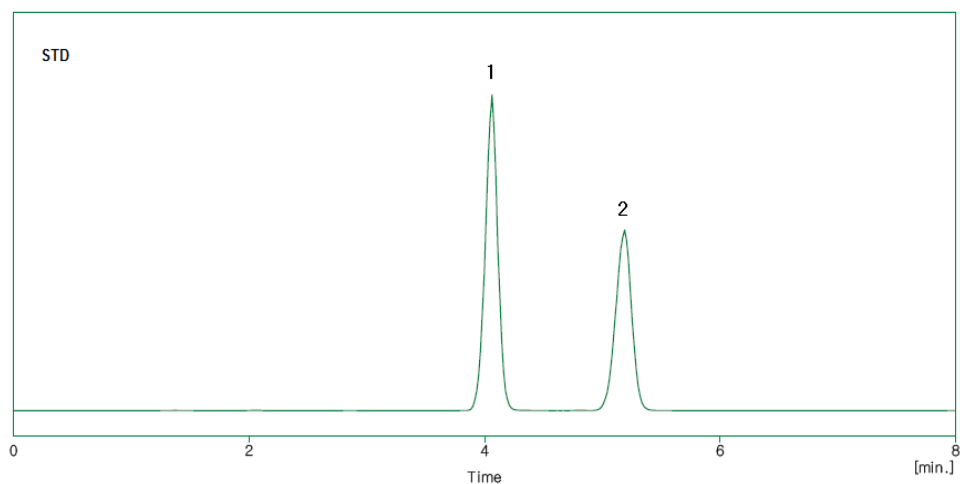
Detector : UV/Vis 360nm

Column : C18 (4.6\*250mm, 5um)

Injection Volume : 20ul

Sample preconditioning : DNPH Derivatization

## 2. Chromatogram



1. Formaldehyde

2. Acetaldehyde

