



Analysis of Residual Solvents in Packing Materials

1. Analytical Condition

YL6900 GC/MS System with a HS Sampler

Oven : 30 °C(3min) -> 20 °C/min -> 150 °C(1min)

Column : DB-5MS UI (30 m * 0.25 mm * 0.5 µm)

Carrier gas : He, 1 mL/min (Split ratio 20:1)

Injector : Capillary 230 °C

Headspace: 80°C, 10min heating, 1mL Injection

Detector : MSD (Scan & SIM mode)

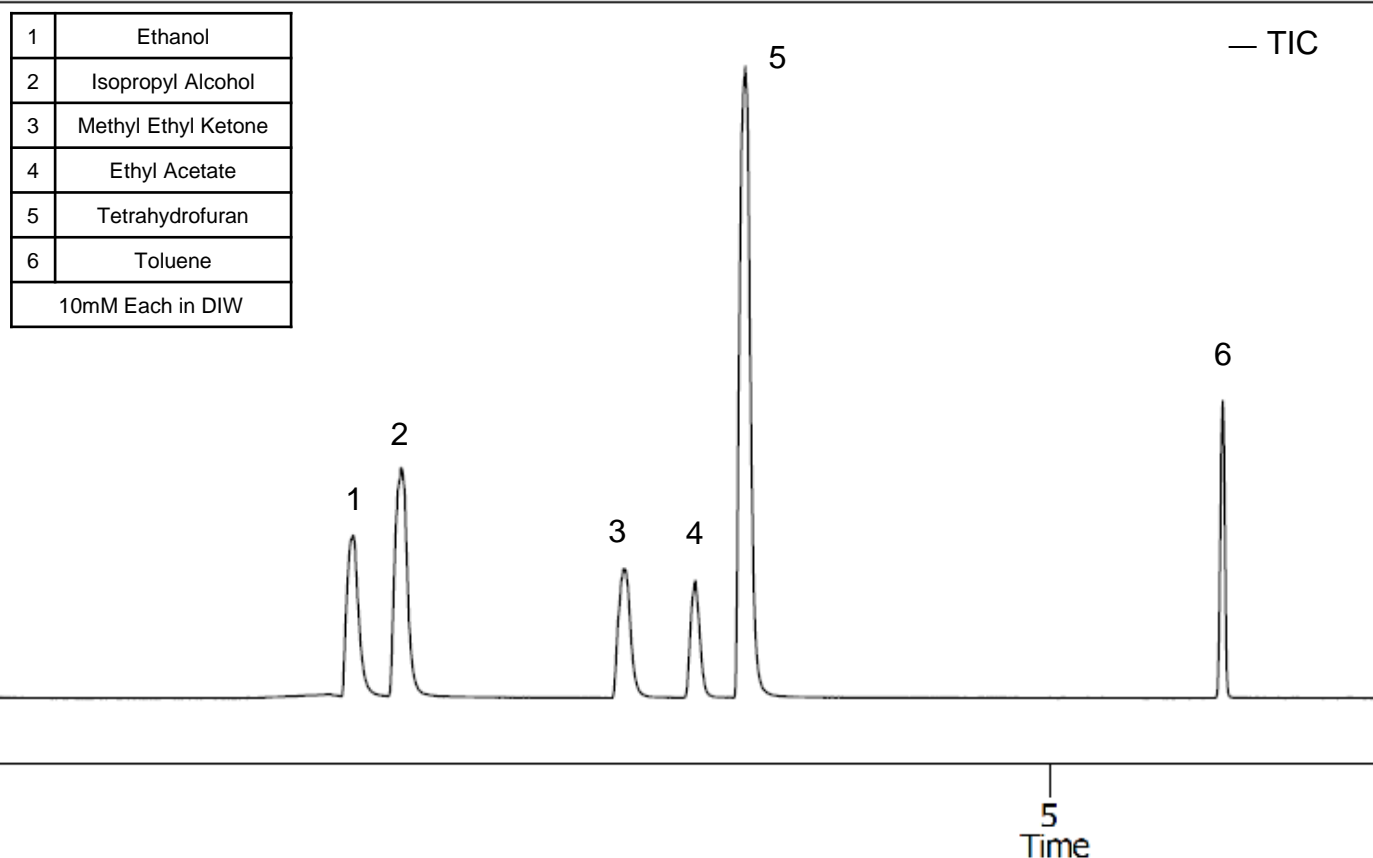
Ion source : 200 °C

Transfer line : 250 °C

Start time 3 min

2. Chromatogram (Scan Mode)

1	Ethanol
2	Isopropyl Alcohol
3	Methyl Ethyl Ketone
4	Ethyl Acetate
5	Tetrahydrofuran
6	Toluene
10mM Each in DIW	



Analysis of Residual Solvents with a Headspace Sampler

3. Spectra

